

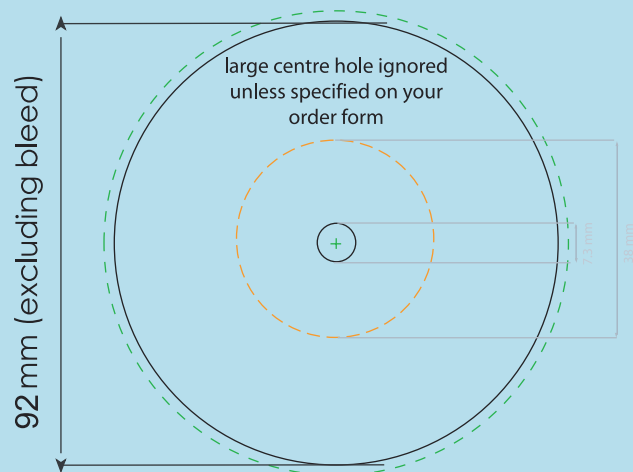
mobineko

7" LABEL TEMPLATE
VERSION: 4

PAPER STOCK: 150gsm SILK TRIPLE COATED

COLOUR MODE: CMYK

RESOLUTION: 300DPI



6

Artwork Guide

Preparing your artwork correctly is the most important thing you can do to ensure your job runs smoothly and quickly.

If you have not prepared artwork correctly we will let you know and prepare a DTP proof if necessary, but this will normally hold back your release date or cause extra complications.

Start by downloading the correct template for your job from our support site:

<http://www.mobineko.com/support>

Experts may use their own print templates if preferred, but it is recommended that you download and use Mobineko's templates as dimensions can vary between factories.

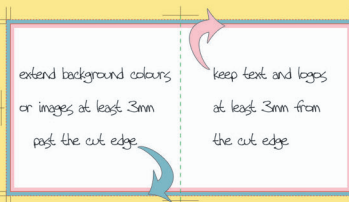
Bleed margins are required for all printed parts except onbody artwork, which should be prepared as you would expect to see the finished disc.



Remember to switch off any guides or template lines before sending us artwork. If you have any questions about printed parts, it's always best to call us first on FREEPHONE 0800 567 7587 or email dtg@mobineko.com.

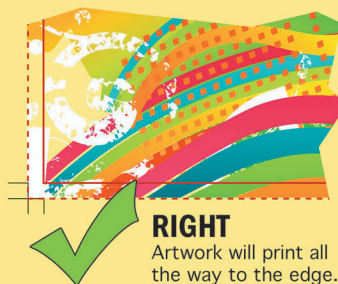
When preparing artwork with any background other than solid white, you must always allow the background colour or images to spill out into the bleed area.

Keep text and logos at least 3mm away from the cut edge or they will look like they are falling off the page.



7

Bleed Margins



RIGHT

Artwork will print all the way to the edge.



WRONG

Artwork will print with white space all around.

FINAL CHECK

Did you remember to include a bleed margin on your printed parts (see above)?

Is your document in CMYK mode, not RGB mode?

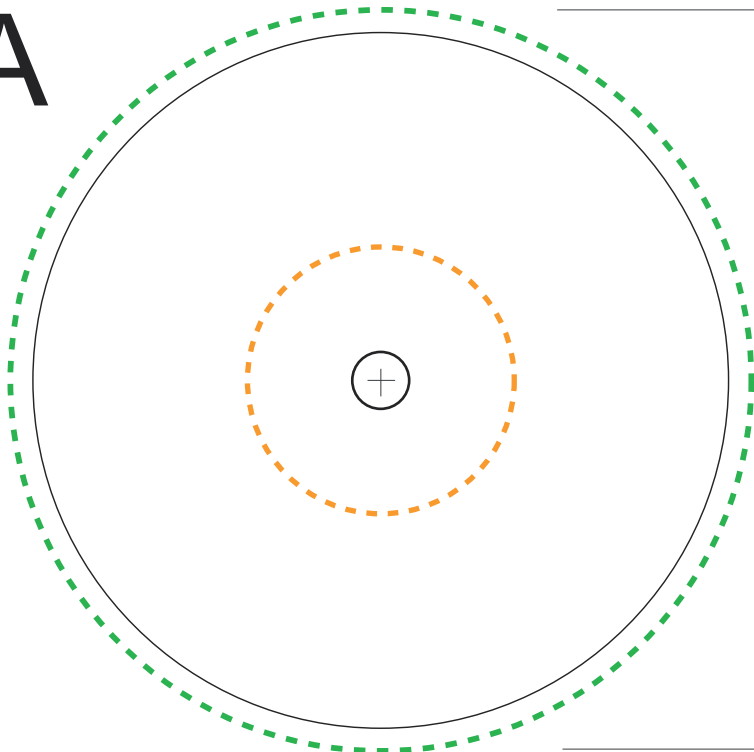
Is your artwork at a resolution of 300dpi?

Did you remember to switch off guide and template layers before sending your artwork?

If your artwork is not flattened, did you convert all text to outlines?

PLACE YOUR ARTWORK IN THE TEMPLATE BELOW AFTER READING THE INSTRUCTIONS

A



B

