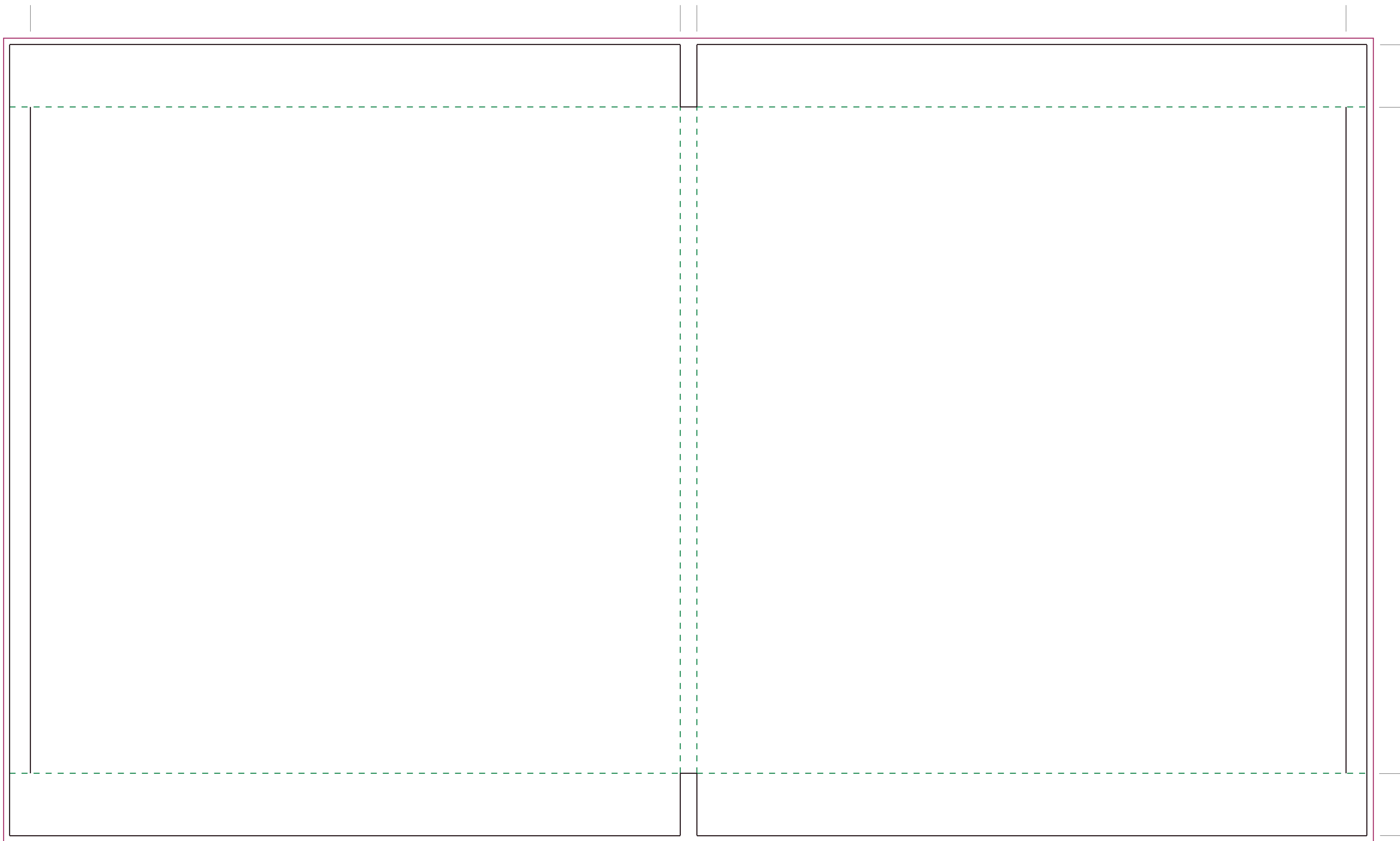
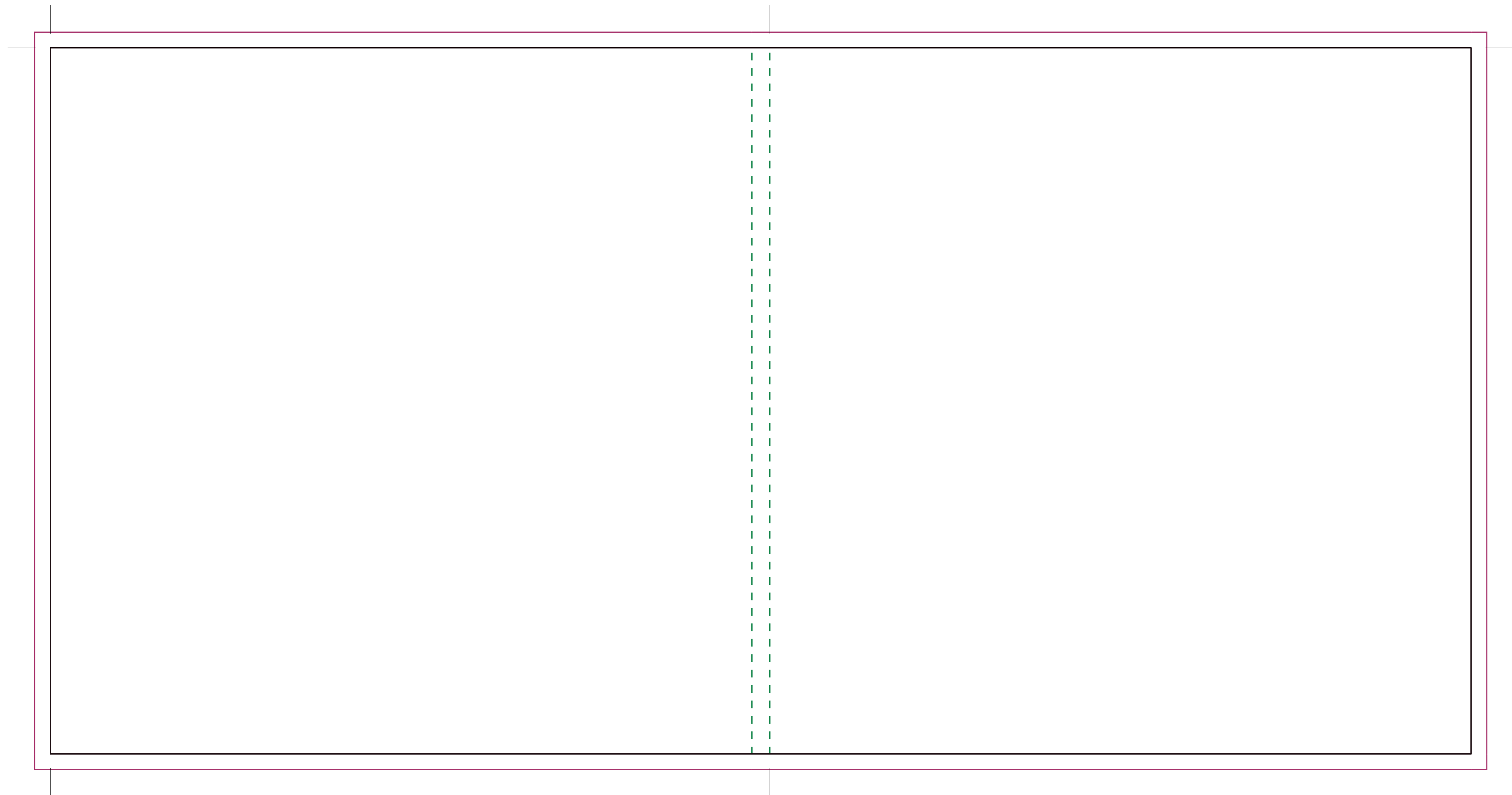


CUT LINE  
BLEED LINE (EXTEND BACKGROUNDS TO THIS LINE)  
FOLD/PERFORATION LINE



**OUTSIDE (COVER)  
BACK**

**OUTSIDE (COVER)  
FRONT**



**INSIDE  
FRONT (LEFT)**

**INSIDE  
FRONT (RIGHT)**