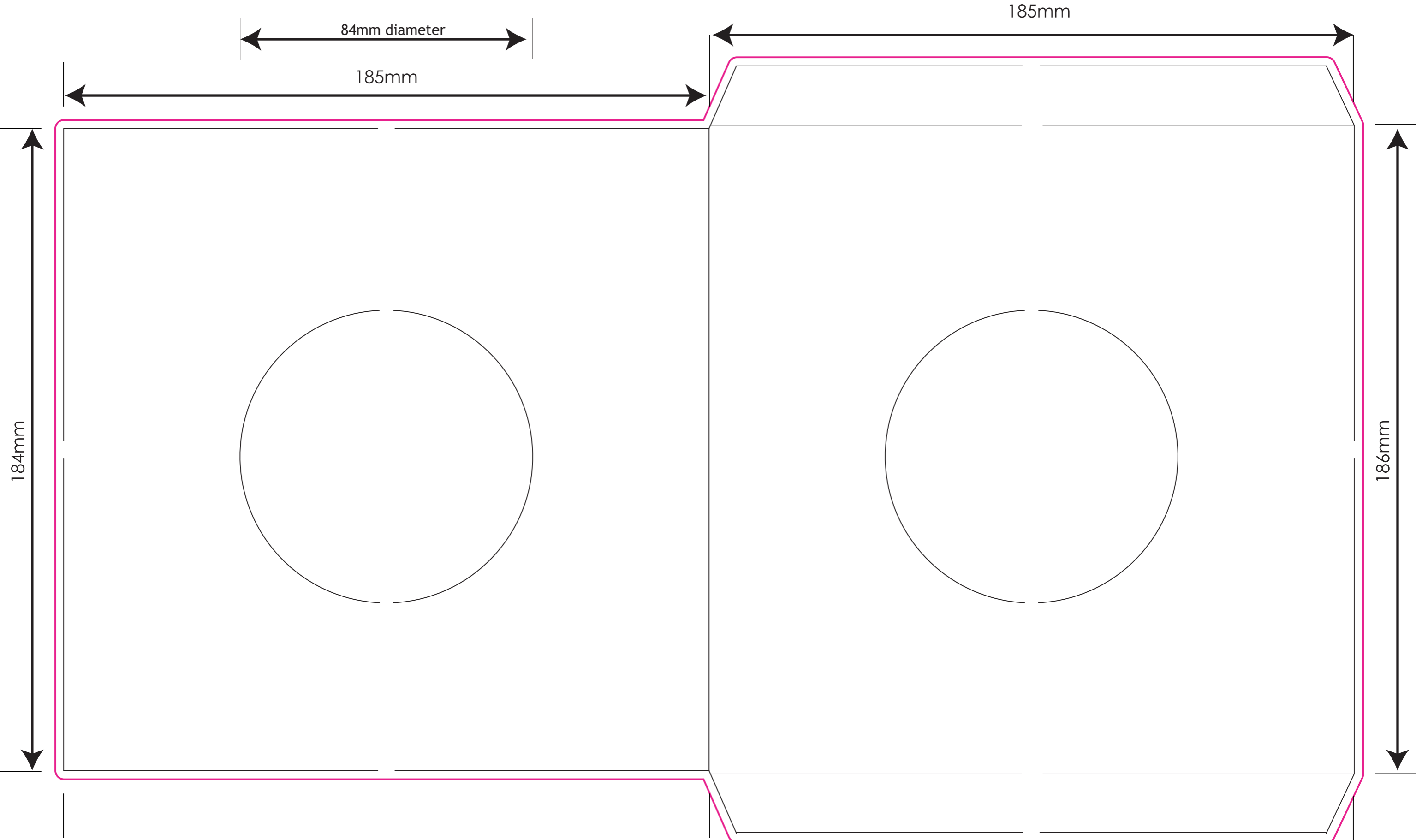


# MOBINEKO 7" SLEEVE WITH 1, 2 or NO HOLES v3.0

SLEEVES ARE MADE WITH NO HOLES BY DEFAULT.



**BLEED**

**CUT**

- Specifications:
- 1. don't use dimensions for Photoshop or Illustrator - use our supplied templates
  - 2. try to save in vector formats for best quality - otherwise save at 300dpi
  - 3. files must be supplied in CMYK format using Japan Web Coated (Ad) or Japan Color profile
  - 4. include only cropmarks, not template lines - or they will appear on the finished prints
  - 5. acceptable formats are PSD, AI, PDF or TIF
  - 6. convert all text to outlines and merge all raster layers

**FRONT**